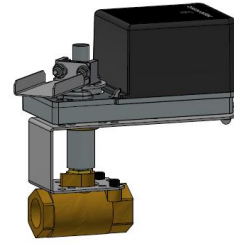




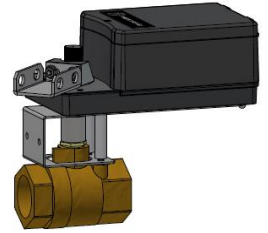
2-Way Industrial Ball Valve Specification and Installation Instructions

Models

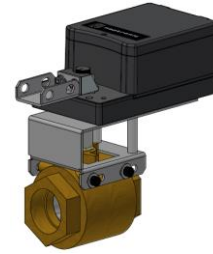
SBAxxxxXS1: 2-way, 1/2", Reduced Port, NPT female
 SBBxxxxXS1: 2-way, 3/4", Reduced Port, NPT female
 SBCxxxxXS1: 2-way, 1", Reduced Port, NPT female
 SBDxxxxXS1: 2-way, 1-1/4", Reduced Port, NPT female
 SBExxxxXS1: 2-way, 1-1/2", Reduced Port, NPT female
 SBFxxxxXS1: 2-way, 2", Reduced Port, NPT female
 SBHxxxxXS1: 2-way, 3", Reduced Port, NPT female
 FPAxxxxXS1: 2-way, 1/2", Full Port, NPT Female
 FPBxxxxXS1: 2-way, 3/4", Full Port, NPT Female
 FPCxxxxXS1: 2-way, 1", Full Port, NPT Female
 FPDxxxxXS1: 2-way, 1-1/4", Full Port, NPT Female
 FPExxxxXS1: 2-way, 1-1/2", Full Port, NPT Female
 FPFxxxxXS1: 2-way, 2", Full Port, NPT Female
 FPGxxxxXS1: 2-way, 2-1/2", Full Port, NPT Female



With B Series
Actuators (1/2"-3/4")



With T Series
Actuators (1" - 1-1/2")



With R Series Actuators (2"-3")

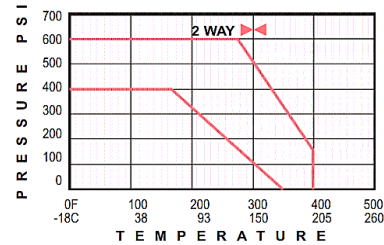


Fig. 1 Pressure vs. Temperature

Features

- High flow characteristics with low pressure drops
- Maximum close-off pressure of 300 PSI
- Maximum valve body rating of 600 PSIG

Models

Size	2-Way Models	Cv	Kv	Close Off PSI
1/2"	SBA0020XS1	2	1	150
	SBA0040XS1	4	3	150
	FPA0150XS1	15	13	150
3/4"	SBB0300XS1	30	25	150
	FPB0510XS1	51	44	300
1"	SBC0430XS1	43	37	300
	FPC0680XS1	68	58	300
1-1/4"	SBD0480XS1	48	41	300
	FPD1250XS1	125	108	150
1-1/2"	SBE0840XS1	84	72	150
	FPE1770XS1	177	153	300
2"	SBF1080XS1	108	93	150
	FPF3890XS1	389	336	150
2-1/2"	FPG5030XS1	503	435	75
3"	SBH3700XS1	370	320	75

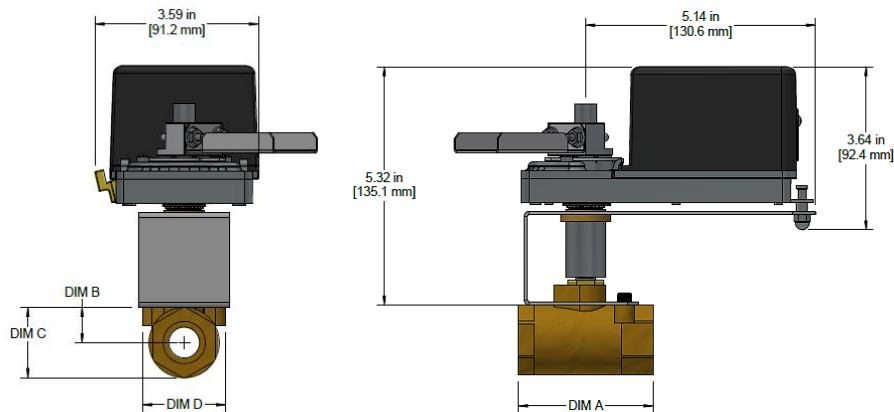


Technical Data

Specification		All Models
Actuator Compatibility		All Neptronic B, R, and T series actuators
Sizes		1/2" to 3"
Range Cv [Kv]		2 to 370 [1 to 320]
Service		Hot water, Chilled Water, Glycol up to 50%, 15 PSIG, Saturated Steam (Optional: 150 PSIG saturated steam)
Valve Flow Type		2 Way: Equal Percentage
Static Pressure & Temperature		Refer to Fig. 1 above
Maximum Working Pressure		2 Way: 600 PSIG WOG
Leakage		0%
Materials	Body	Bronze
	Ball and Stem	Stainless Steel
	Stem Seals	Composite of reinforced Teflon & EPDM "O" rings
	Seats	Reinforced Teflon
End Connections		Standard NPT Female

Dimensions

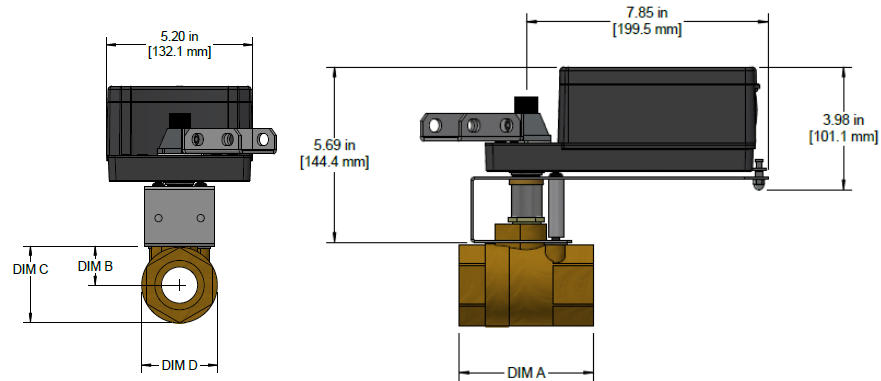
Mounted on B Series Actuators



Valve Size (Brass)	Valve Model Prefix	A	B	C	D
1/2"	SBA0020XS1	2.20in [56mm]	1.12in [28mm]	3.20in [81mm]	6.45in [164mm]
1/2"	SBA0040XS1	2.20in [56mm]	1.12in [28mm]	3.20in [81mm]	6.45in [164mm]
1/2"	FPA0150XS1	2.20in [56mm]	1.12in [28mm]	3.20in [81mm]	6.45in [164mm]
3/4"	SBB0300XS1	3.00in [76mm]	1.50in [38mm]	3.50in [89mm]	6.75in [171mm]
3/4"	FPB0510XS1	3.12in [79mm]	1.56in [40mm]	3.80in [96mm]	7.55in [192mm]

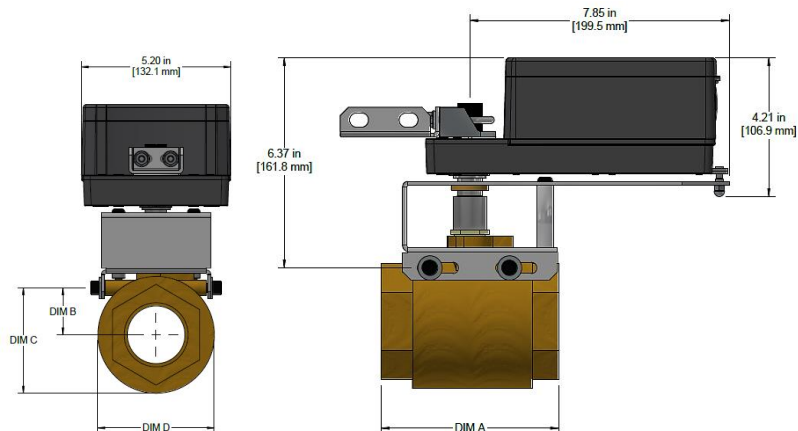


Mounted on T Series Actuators



Valve Size (Brass)	Valve Model Prefix	A	B	C	D
1"	SBC0430XS1	3.34 in [85 mm]	1.00 in [26 mm]	1.97 in [51 mm]	2.00 in [51 mm]
1"	FPC0680XS1	3.62 in [92 mm]	1.13 in [29 mm]	2.25 in [57 mm]	2.25 in [57 mm]
1-1/4"	SBD0480XS1	4.00 in [102 mm]	1.13 in [29 mm]	2.50 in [63 mm]	2.70 in [69 mm]
1-1/4"	FPD1250XS1	4.25 in [108 mm]	1.38 in [35 mm]	2.75 in [70 mm]	2.75 in [70 mm]
1-1/2"	SBE0840XS1	4.37 in [111 mm]	1.38 in [35 mm]	2.70 in [69 mm]	2.70 in [69 mm]
1-1/2"	FPE1770XS1	4.75 in [121 mm]	1.27 in [33 mm]	2.85 in [73 mm]	3.15 in [80 mm]

Mounted on R Series Actuators



Valve Size (Brass)	Valve Model Prefix	A	B	C	D
2"	SBF1080XS1	4.68 in [119 mm]	1.57 in [35 mm]	3.25 in [83 mm]	3.36 in [86 mm]
2"	FPF3890XS1	5.37 in [137 mm]	1.63 in [42 mm]	3.65 in [93 mm]	4.05 in [103 mm]
2-1/2"	FPG5030XS1	6.50 in [166 mm]	1.95 in [50 mm]	4.30 in [110 mm]	4.70 in [120 mm]
3"	SBH3700XS1	6.75 in [172 mm]	1.95 in [50 mm]	4.30 in [110 mm]	4.70 in [120 mm]

Note: These dimensions depend on the supplier and can be changed without any warning.



Recycling at end of life: please return this product to your Neptronic local distributor for recycling. If you need to find the nearest Neptronic authorized distributor, please consult www.neptronic.com.